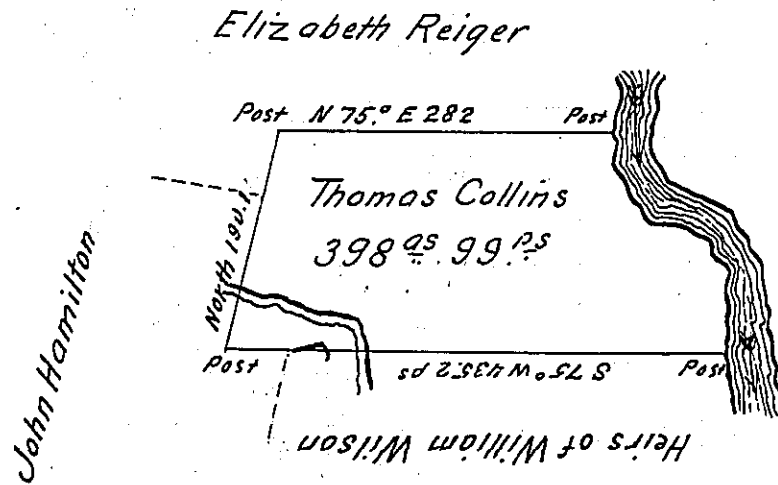


*Courses and distances down
French Creek beginning at a post*



- S. 30 1/2 E 40
- S 48 1/4 E 27
- S 62° E 26
- S 81° E 14
- N 79 1/2 E 24
- S 76 1/4 E 9
- S 30 1/2 E 55
- S 15° E 40
- 235

*In pursuance of a Warrant for 400 acres of land dated the 24th day of December 1802
was surveyed the 6th day of September 1803 for Thomas Collins the above described
Tract of land containing 398 acres 99 perches and allowance of six per Cent for
Roads &c. Situate in Mead Township and Crawford County.*

*To Samuel Cochran Esquire
Surveyor General*

William M^c Arthur D. Sr.

*IN TESTIMONY that the above is a copy of the original remaining on file in
the Department of Internal Affairs of Pennsylvania, made
conformably to an Act of Assembly approved the 16th day of
February, 1833, I have hereunto set my Hand and caused
the Seal of said Department to be affixed at Harrisburg,
this nineteenth day of April 1904.*

George R. [Signature]
Secretary of Internal Affairs.